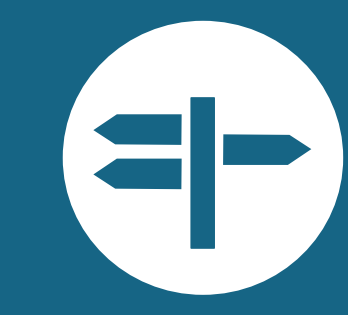


Central Greenway Vision



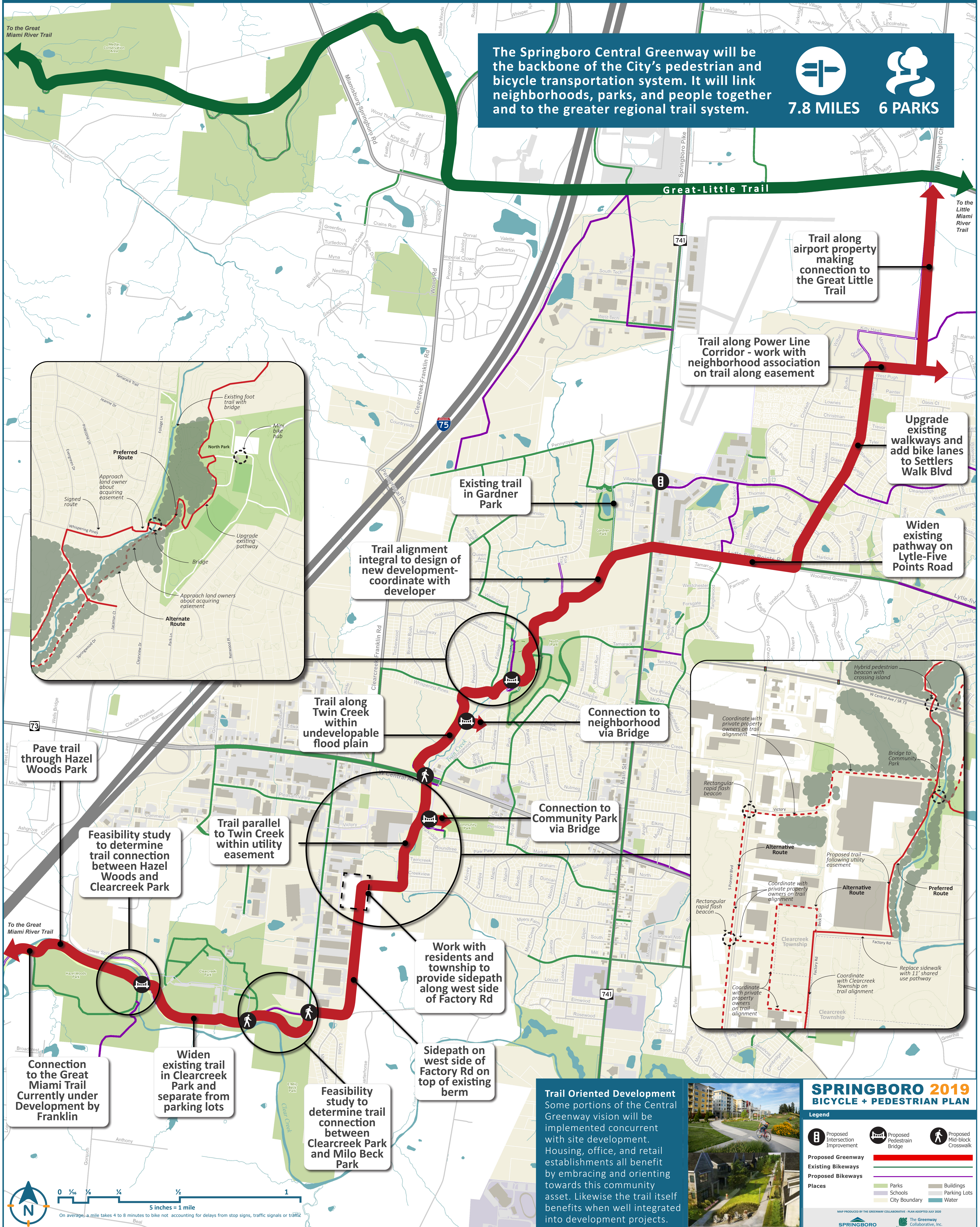
The Springboro Central Greenway will be the backbone of the City's pedestrian and bicycle transportation system. It will link neighborhoods, parks, and people together and to the greater regional trail system.



7.8 MILES



6 PARKS



Trail Oriented Development
Some portions of the Central Greenway vision will be implemented concurrent with site development. Housing, office, and retail establishments all benefit by embracing and orienting towards this community asset. Likewise the trail itself benefits when well integrated into development projects.



SPRINGBORO 2019 BICYCLE + PEDESTRIAN PLAN

Legend

- Proposed Intersection Improvement:** Circle with 'B'
- Proposed Pedestrian Bridge:** Bridge icon
- Proposed Mid-block Crosswalk:** Pedestrian icon
- Proposed Greenway:** Thick red line
- Existing Bikeways:** Thin red line
- Proposed Bikeways:** Dashed red line
- Places:** Parks (green), Schools (yellow), City Boundary (blue outline), Buildings (grey), Parking Lots (light grey), Water (blue)

MAP PRODUCED BY THE GREENWAY COLLABORATIVE, INC. PLAN ADOPTED JUNE 2020

THE GREENWAY COLLABORATIVE, INC.