

COMMUNITY ENGAGEMENT

A public engagement plan was developed to gather input from potential users and ensure representation from a diverse and representational range of the community. The initial sessions occurred during the months of August in 2024, concentrating on addressing issues, identifying opportunities, and establishing goals. The follow pages outline the process and tools used to engage the community.



Pop-up displays

Handouts, yard signs, and display boards promoting project awareness, gathering basic input, and advertising online surveys and input maps were showcased throughout the city at local events, and key locations, such as parks, community centers and the bike shop. Local events included It's Not A Park, It's An Adventure at Butcher Park and Warren's Birthday Bash.

Active Mobility Plan Workshop

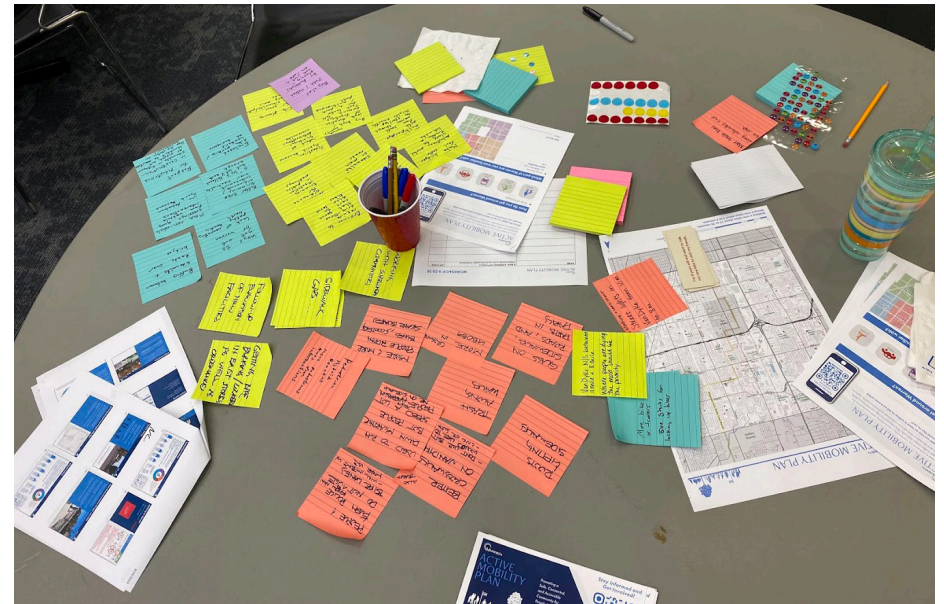
A workshop was held August 29, 2024 in the first floor conference room of City Hall. During the meeting attendees engaged in various exercises to identify key aspects that make Warren special, share perspectives on walking and biking conditions, and pinpoint barriers to connectivity. The session concluded with a discussion on rethinking streets as places and outlining project hopes and aspirations.

Surveys

To gain input from as many community members as possible, online and paper surveys were developed and distributed. The surveys were colorful and easy to fill out. Surveys were hosted on the project web page, WalkBike.Info/Warren and focused on questions that would have a direct impact on the plan. Handouts and posters with the website link and QR code were distributed at the pop-up events, posted at key locations around the city, and promoted on social media.

Crowdsourcing Map

An online crowdsourcing map was established to gather location specific input, which was categorized into six groups: Add Bike Parking, Add a Bus Shelter, Fill a Sidewalk Gap, Crosswalk Needed, Bike Rental/Bike Share and Other. This map was hosted on the project web page and was promoted in conjunction with the online surveys. Additionally, input collected from in-person events was consolidated into this map.



Links to View Public Input Data

Survey Dashboard: https://www.surveymonkey.com/stories/SM-SQaeK1VnIr7GPdPPQhL9QQ_3D_3D/

Web Map Input: <https://www.google.com/maps/d/edit?mid=1Sg-gveWtLjdruLPwvf1HqyLB4oifayQ&usp=sharing>

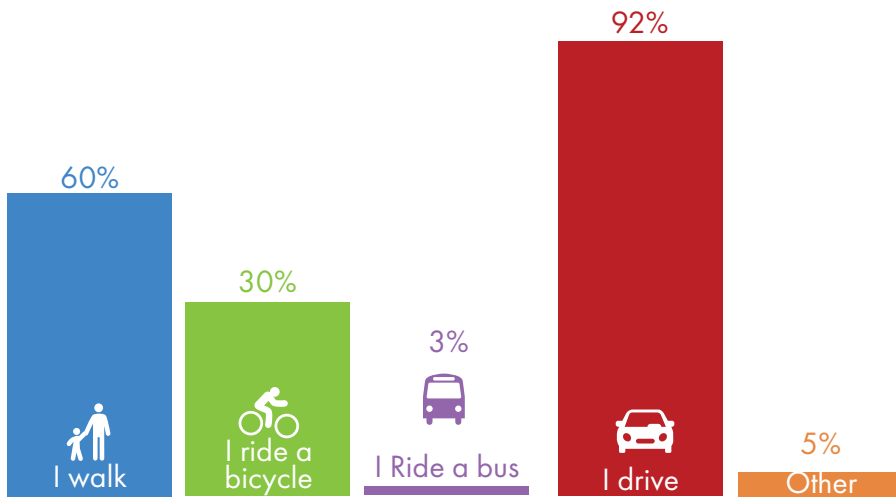
Pop-up Events and Active Mobility Workshop Summaries: https://drive.google.com/drive/folders/1TCxuKaV81U6k1cXdfODbc7_ciBgB8hXr?usp=sharing



ACTIVE MOBILITY PLAN WORKSHOP- AUGUST 29, 2024

Public Input Summary

Throughout the month of August 2024, public engagement for the plan was promoted through various media platforms: email groups, flyers, posters, and in-person events to reach a broad audience. The input during this period was centered on identifying issues and opportunities for non-motorized transportation. Community members participated by attending local events, completing surveys, and offering location-specific comments on a map. This valuable input was instrumental in shaping the project's goals and laying out the foundation for guiding the plans recommendations. The following pages provide a summary of the gathered input.



HOW DO YOU GET AROUND WARREN?



50%
I WORK IN
WARREN



25%
I HAVE
SCHOOL-AGED
CHILDREN



87%
I LIVE IN
WARREN



0%
ENGLISH
IS MY 2ND
LANGUAGE



2%
I AM UNDER
THE AGE OF 16



16%
I AM
RETIRED



14%
I DON'T
HAVE A BIKE



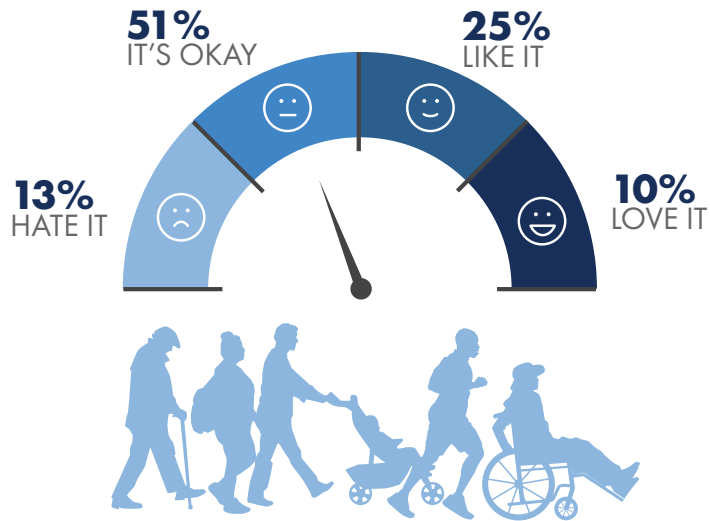
5%
I DON'T
HAVE A CAR



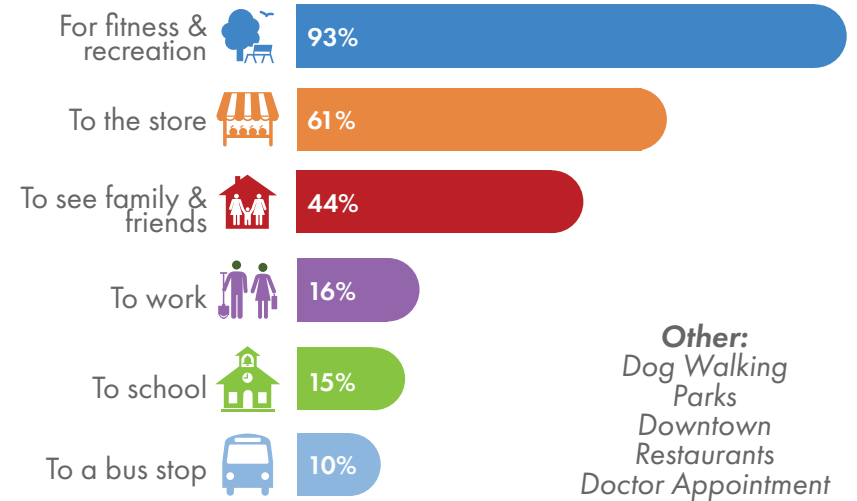
6%
I USE A
MOBILITY AID
(CANE, ETC)

People Walking, Running, In a Wheelchair, Pushing Strollers, Etc.

HOW WOULD YOU RATE YOUR SATISFACTION WITH WALKING IN WARREN?



I AM INTERESTED IN WALKING...



IS ANYTHING PREVENTING YOU FROM WALKING TO THOSE DESTINATIONS RIGHT NOW?

TOP 5 BARRIERS PREVENTING PEOPLE FROM WALKING IN WARREN

- Poor Sidewalk Conditions:** Uneven, cracked, or missing sidewalks, and lack of curb cuts
- Personal Safety Concerns:** Fear of crime, loose pets, and aggressive drivers
- Lack of Infrastructure:** Missing sidewalks, few crosswalks, and poor lighting
- Traffic and Busy Roads:** Dangerous, high speeds, and unsafe intersections
- Environmental and Aesthetic Factors:** Lack of shade, limited destinations, and unattractive streets.

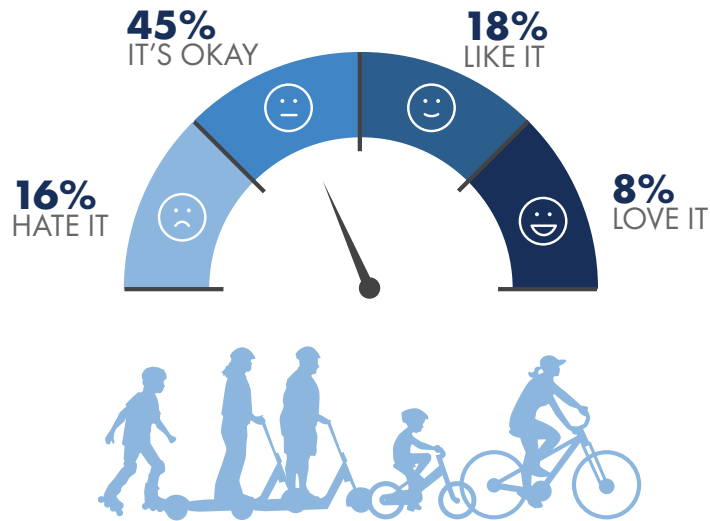
WHAT WOULD YOU LIKE TO SEE CHANGED?

TOP 5 DESIRED CHANGES FOR WALKING IN WARREN

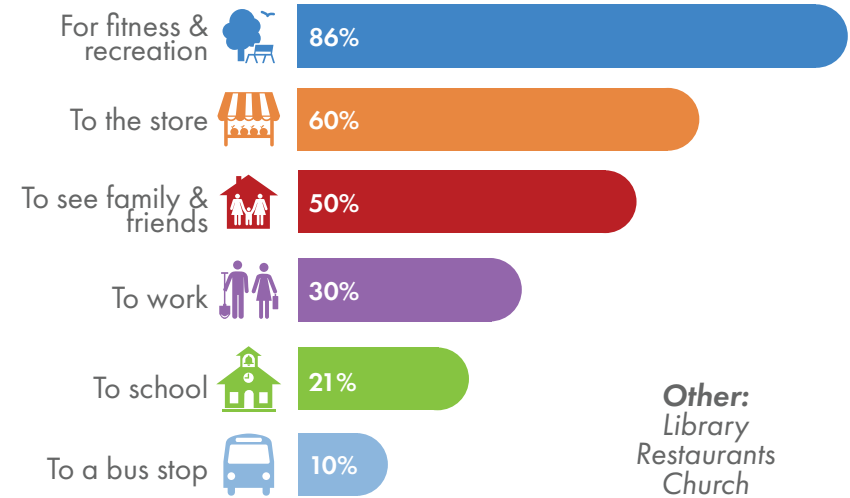
- Improved Conditions:** Repair uneven, cracked and missing sidewalks, add curb cuts, and expand width for safety and comfort
- Better Crosswalks and Traffic Safety:** More crosswalks, longer crossing times, pedestrian signals and speed control
- More Walkable Spaces:** Create downtown areas, add walking and nature trails, more green spaces and pedestrian-friendly routes
- Increased Maintenance and Cleanliness:** Snow and litter removal, enforcement, sidewalk obstructions, damaged pathways
- Improved Lighting and Safety:** More lighting, police presence, and creating safer places

People Biking, Riding Scooters, Skating, Etc.

HOW WOULD YOU RATE YOUR SATISFACTION WITH RIDING IN WARREN?



I AM INTERESTED IN RIDING...



IS ANYTHING PREVENTING YOU FROM RIDING TO THOSE DESTINATIONS RIGHT NOW?

TOP 5 BARRIERS PREVENTING PEOPLE FROM RIDING IN WARREN

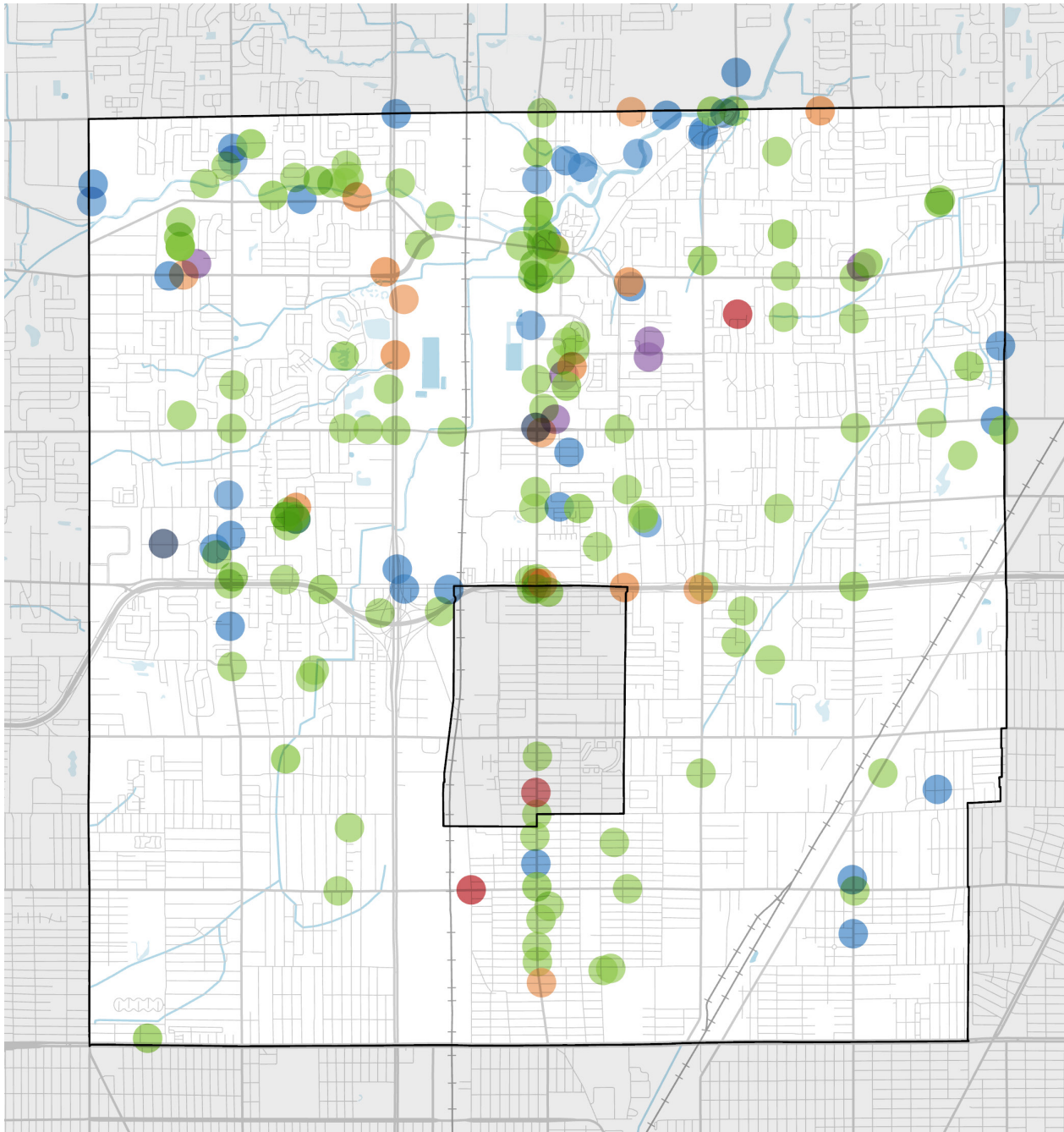
- Lack of Infrastructure:** Few bike lanes, trails, and paths, making biking difficult and unsafe, share the road policies are insufficient
- Traffic Safety Concerns:** High-speed traffic, busy roads, dangerous intersections, and aggressive drivers
- Poor Road and Sidewalk Conditions:** Potholes, uneven surfaces, broken pavement and inadequate maintenance
- Inadequate Bike Parking:** Lack of safe and secure places to park bikes at public spaces and businesses
- General Safety and Comfort:** Poor lighting, overgrown vegetation, and unsafe crossings

WHAT WOULD YOU LIKE TO SEE CHANGED?

TOP 5 DESIRED CHANGES FOR RIDING IN WARREN

- More Bike Lanes and Trails:** Increased bike lanes, designated bike paths, and safe, shaded trails throughout the city
- Improved Safety and Infrastructure:** Safer intersections and crosswalks, protected bike lanes, and smoother roads/sidewalks
- Better Bike Parking:** More accessible and secure bike parking, including bike racks and lockers at public spaces and businesses
- Traffic Enforcement:** Stricter enforcement to keep vehicles out of bike lanes and ensure safer speeds
- Connectivity:** Create a connected network of bike paths linking key areas and nearby communities, including the Iron Belle Trail

Specific Places



An online crowdsourcing map and surveys were used to collect 200 comments on specific places. Overall, the input highlighted a strong demand for improved bike and pedestrian infrastructure, safer and more connected sidewalks, and better maintenance of public spaces. The input data is very specific to individual places and should be referenced as specific area and corridor plans are developed. The following page highlights major themes based on the comment categories.

Comment Categories

- Fill a Sidewalk Gap
- Crosswalk Needed
- Add Bike Parking
- Add a Bus Shelter
- Bike Rental/Bike Share
- Other

Sidewalks:

- **Condition and Maintenance:** Many sidewalks are in poor condition, with issues such as raised cracks, gaps, and crumbling pavement. There are repeated calls for repairs and maintenance.
- **Coverage and Connectivity:** Significant gaps in sidewalks force pedestrians to walk on roads or grass, highlighting a need for improved coverage and connectivity.
- **Safety Concerns:** Narrow, obstructed, or poorly maintained sidewalks create safety hazards. Specific concerns include visibility issues, dangerous ramps, and debris accumulation.

Crosswalks:

- **Need for More Crosswalks:** Calls for additional or improved crosswalks in various locations, including better marking and visibility.
- **Safety and Visibility:** Address dangerous crossings and inadequate pedestrian signals at busy intersections.
- **Connectivity:** There's a need to address gaps in crosswalks to ensure safe and convenient pedestrian access across major roads and intersections.

Bike Parking:

- **Availability and Coverage:** There is a strong demand for bike parking at all parks and retail businesses. Specific requests include bike racks at every park and secure bike lockers at retail locations with larger parking areas.
- **Security:** Current bike parking lacks protection against theft, with calls for secure bike lockers to address this issue.

Public Transit and Shelters:

- **Bus Shelters:** Requests for additional bus shelters, particularly at key intersections like Van Dyke and Nine Mile, to improve comfort and accessibility for transit users.
- **General Transit Improvements:** Improve bus routes and consider more frequent service, and mention of general needs for improved transit infrastructure.

Bike Rental/Bike Share:

- **Accessibility:** There is a call for the introduction of bike and scooter share programs in centralized locations across Warren to increase access to alternative transportation options.

Other:

- **Trail Expansion:** Interest in expanding and improving walking and biking trails, including along Red Run and ITC corridor.
- **Park Amenities and Upgrades:** Complaints about locked restrooms at parks and the need for improved maintenance and facilities. Calls for better maintenance and facilities in parks, such as new walking paths, better restroom access, improved playground equipment and removal of dead trees.
- **General Infrastructure and Beautification:** Enhance the appearance and safety of major roads and pedestrian areas by improving sidewalk and bike lane maintenance, addressing cleanliness and road repair issues, and tackling problems related to trash, encampments, and overall aesthetics.
- **Traffic and Safety:** Concerns about traffic enforcement and intersections that cause accidents or have poor visibility. Calls for better traffic management and infrastructure improvements in various locations.